

The City's draft Comprehensive Plan

## Exercise 1: Policies and Action Steps

### Purpose of the Meeting

The draft Minneapolis 2040 plan is out for public comment from March 22 until July 22, 2018. This is one of many opportunities to provide feedback on the draft plan. Comments will help shape Policies and Action Steps in order to help achieve the comprehensive plan goals.

The comments collected during this period will be used to inform a revised draft of *Minneapolis 2040* which will be released in late September.

### Meeting Goal

- Review and provide feedback on the draft comprehensive plan's Policies and Action Steps.

*Minneapolis 2040* is a draft Comprehensive Plan that shapes how the city will grow and change. The draft covers topics such as housing, job access, the design of new buildings, and how we use our streets.

Over the past two years, the people of Minneapolis have told us a lot about their vision and hopes for the future of our city. A main theme we heard is that as the city grows, everyone must benefit from that growth. Historically, not everyone has. This draft plan is one opportunity to undo barriers and overcome inequities created by a history of policies in our city that have prevented equitable access to housing, jobs, and investments. We invite you to provide feedback on the completed draft plan.

### Directions Exercise 1: Policies and Action Steps

The comprehensive plan is made up of **Policies**, **Action Steps**, and **Maps**, and organized by **Goals and Topics**. **Policies** are high-level statements intended to guide City decision-making in a manner that achieves the comprehensive plan goals. Each policy supports one or more of those goals. Under each **Policy** is a list of **Action Steps**, a to-do list, intended to convey what needs to happen in order to make the policy come to fruition. The **Action Steps** provide direction for future decisions on adding and modifying the tools that the City uses to achieve its goals.

The policies and action steps highlighted in this packet is a sample of the full list of policies and action steps related to the following topics. Please visit the website to see to see all the policies, and to provide comment either online or within the attached worksheet.

The purpose of these worksheets is to collect feedback on the policies and action steps to help shape them in order to achieve the comprehensive plan goals.

1. Read the comprehensive plan goals associated with the topic.
2. Read the narrative and supporting context.
3. Review the policy and action steps.
4. Provide feedback on the policies and action steps by writing your ideas on the worksheet. What would you change? What else should we be doing? Explain why.

The City's draft Comprehensive Plan

### Exercise 1: Policies and Action Steps

#### Goal: Affordable & Accessible Housing

In 2040, all Minneapolis residents will be able to afford and access quality housing throughout the city.

Visit the Minneapolis 2040 website to view all the Policies and Action Steps for Affordable & Accessible Housing:

[minneapolis2040.com/goals/affordable-and-accessible-housing/](http://minneapolis2040.com/goals/affordable-and-accessible-housing/)

1

Since 2000,



15,000

affordable housing units are lost

These units generally still exist, but they cost more to own or rent, making them unaffordable for those earning 50% of the area median income (AMI). In 2017, the AMI was \$90,400.

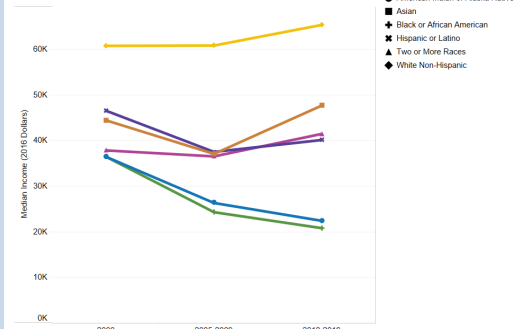
Based on this, 50% of the AMI for a single-person household is \$31,650 annually (or an hourly wage of \$15.22), and for a family of four it's \$45,200 annually (or a household hourly wage of \$21.73 for a standard workweek).

2

Household incomes in Minneapolis have slightly decreased – but not equally across racial groups.

In these maps, the orange neighborhoods were considered 'affordable' for rental (based on average income by race)

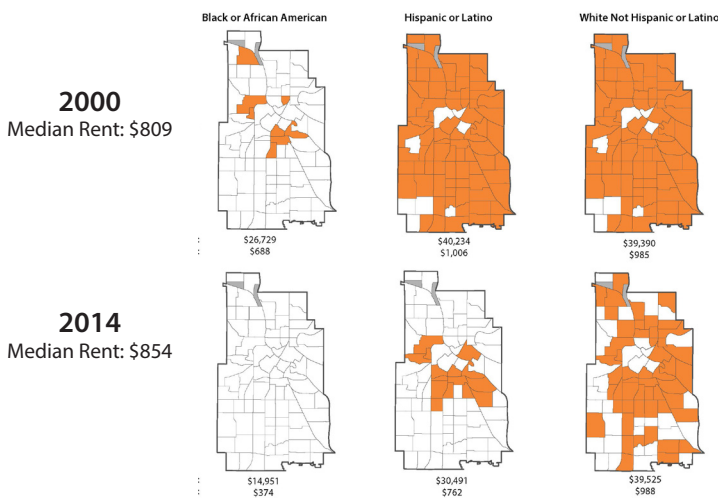
Median Income by Race/Ethnicity in Minneapolis



Sources: Decennial Census, American Community Survey

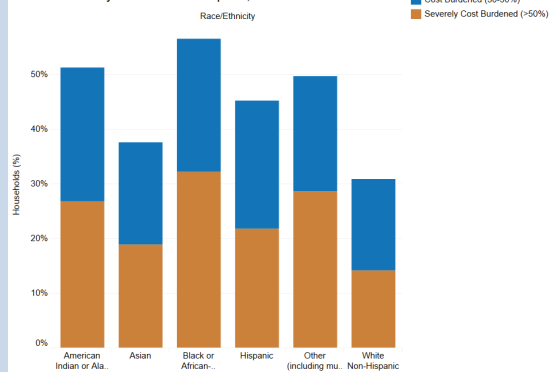
3

In these maps, the orange neighborhoods were considered 'affordable' for rental (based on average income by race)



These trends have resulted in a greater number of cost-burdened households – households in which more than 30% of household income goes toward housing.

Cost Burden by Race in Minneapolis, 2010-2014



Analysis completed in October 2016 by the Center for Urban and Regional Affairs (CURA)

### Related Policies:

To achieve the goal of affordable and accessible housing, the City of Minneapolis will expand opportunities to increase the housing supply to meet changing needs through the following 19 policies:

Policy 1 - Access to Housing

Policy 23 - Coordinated Development Strategy

Policy 33 - Affordable Housing Production

Policy 34 - Affordable Housing Preservation

Policy 35 - Innovative Housing Production

Policy 36 - Innovative Housing Strategies

Policy 37 - Mixed Income Housing

Policy 38 - Affordable Housing near Transit and Job Centers

Policy 39 - Fair Housing

Policy 40 - Homelessness

Policy 41 - Tenant Protections

Policy 42 - Expand Homeownership

Policy 43 - Housing Displacement

Policy 44 - Comprehensive Investments

Policy 45 - Leverage Housing Programs to Benefit Community

Policy 46 - Healthy Housing

Policy 47 - Housing Maintenance

Policy 48 - Data-Driven Decisions

Policy 80 - Development near METRO Stations

**Comment on select Policies and Action Steps on the following worksheet.**

4

In addition to the lack of sufficient affordable housing, many areas of Minneapolis lack diversity in housing type and size. This specifically limits the opportunity for multifamily housing, which impacts the availability of both affordable and life-cycle housing options.

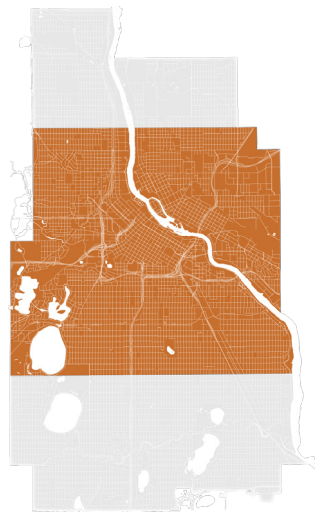
5

The draft plan proposes to reverse the effects of historical policies and regulations to create a more diverse, equitable and affordable housing supply for all residents, including residents of color and indigenous residents.

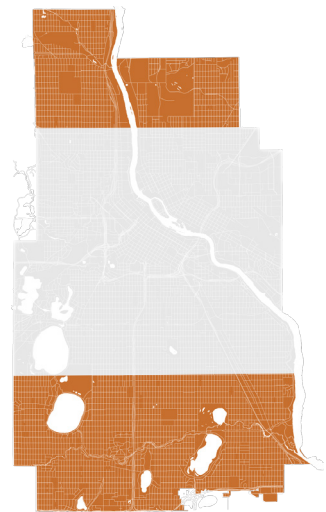
Here are a few of the comprehensive plan's land use proposals:



Allow multifamily housing on select public transit routes, with higher densities along high-frequency routes and near METRO stations.



In neighborhood interiors that contain a mix of housing types from single family homes to apartments, allow new housing within that existing range.



In neighborhood interiors farthest from downtown that today contain primarily single-family homes, achieve greater housing supply and diversity by allowing small-scale residential structures on traditional size city lots with up to four dwelling units, including single-family.

The City's draft Comprehensive Plan



Help us shape and refine these action steps in achieving the goal of affordable and accessible housing. In 2040, all Minneapolis residents will be able to afford and access quality housing throughout the city.

**Policy 1 - Access to Housing / Action Step E**

In neighborhood interiors farthest from downtown that today contain primarily single-family homes, achieve greater housing supply and diversity by allowing small-scale residential structures on traditional size city lots with up to four dwelling units, including single family, duplex, 3-unit, 4-unit, and accessory dwelling unit building types.

**Policy 41 - Tenant Protections / Action Step F**

Ensure rental housing is well-maintained, healthy and safe through proactive policies and programs for property owners and managers, including trainings and maintenance resources.

**Policy 43 - Housing Displacement / Action Step B**

Develop and implement policies and programs that support the preservation and rehabilitation of naturally occurring affordable housing to prevent the displacement of existing residents.

**Policy 43 - Housing Displacement / Action Step D**

Expand programs that support existing homeowners in affording and maintaining their home, with a focus on people of color, indigenous people and vulnerable populations, such as low-income households, the elderly and people with disabilities.

**Policy 44 - Comprehensive Investments / Action Step A**

Prioritize programs to support long-term housing stability, including but not limited to wealth-building housing models and the elimination of criminal and credit report barriers, with a particular focus on communities of color, indigenous communities, and low-income renters.

**Want to Give Your Comments & Feedback Later On?**

We invite you to visit [MINNEAPOLIS2040.com](http://MINNEAPOLIS2040.com) to review the draft comprehensive plan and provide your comments and feedback by July 22nd, 2018

### Exercise 1: Policies and Action Steps

#### Goal: Climate Change Resilience

In 2040, Minneapolis will be resilient to the effects of climate change and diminishing natural resources, and will be on track to achieve an 80% reduction in greenhouse gas emissions by 2050.

Visit the **Minneapolis 2040 website** to view all the Policies and Action Steps for Climate Change Resilience:

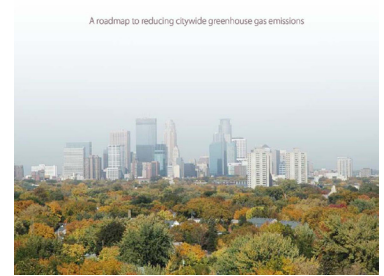
<https://minneapolis2040.com/goals/climate-change-resilience/>

1

Climate change is a defining challenge of this decade and even this century. To be resilient to the effects of climate change and diminishing natural resources, the city's residents, communities, businesses and systems must be able to survive, adapt and thrive despite the stresses and shocks caused by climate change.

City Council adopted the **Minneapolis Climate Action Plan** in 2013 as a road map toward reducing greenhouse gas emissions.

#### Minneapolis Climate Action Plan



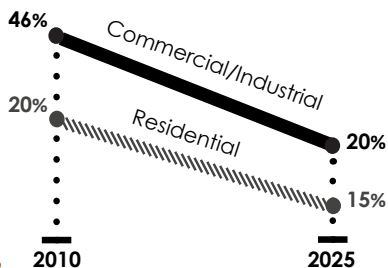
2

#### MINNEAPOLIS' GREENHOUSE GAS EMISSIONS DATA

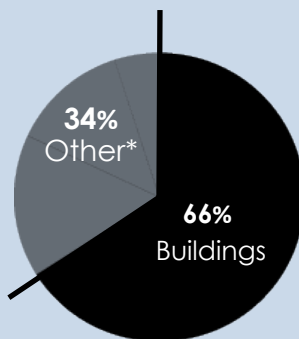
**Minneapolis long-term goals to reduce greenhouse gas emissions:**

**80%**  
Reduction by 2050

**Reduction in Building Energy Efficiency by 2025**

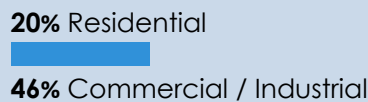


#### Greenhouse Gas Emissions by Sector



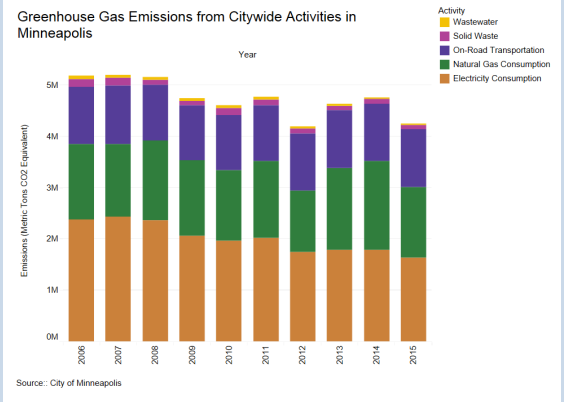
\* Transportation, Solid Waste, Air Travel & Wastewater

#### Emissions by Building Type



#### Climate Condition

Minnesota Climate Change Working Group predicts by the end of the 21st century, average temperature will rise from 5.6F to 8.5F



#### Related Policies:

To achieve the goal of climate change resilience, the City of Minneapolis will strive to substantially increase the energy efficiency of buildings and accelerate the transition to renewable energy in buildings and transportation. At the same time, the City will prepare for the consequences of climate change by investing in improved stormwater management, urban heat island reduction and energy system resilience through the following 19 policies:

Policy 4 - Access to Commercial Goods and Services

Policy 7 - Public Realm

Policy 9 - Open Spaces in

New Development

Policy 13 - Landscaping

Policy 14 - Tree Canopy and

Urban Forest

Policy 16 - Environmental Impacts of Transportation

Policy 17 - Complete Streets

Policy 18 - Walking

Policy 19 - Biking

Policy 20 - Transit

Policy 22 - Downtown Transportation

Policy 66 - Air Quality

Policy 67 - Climate Resilient Communities

Policy 68 - Energy Efficient Buildings

Policy 69 - Renewable and Carbon-Free Energy

Policy 72 - Sustainable Water System Management

Policy 73 - Stormwater Management

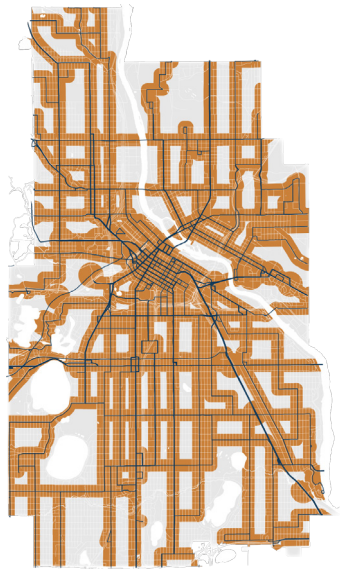
Policy 74 - Integration of Water Management into Development

Policy 80 - Development near METRO Stations

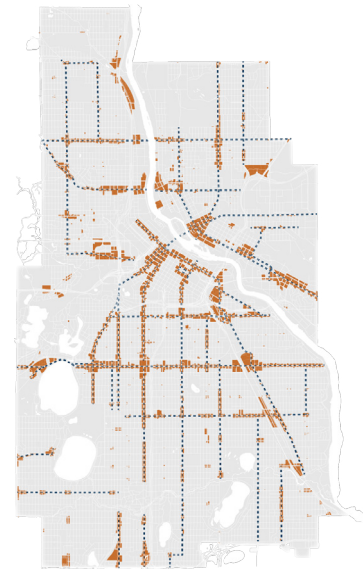
3

In 2015, road transportation was 26% of the City's greenhouse gas emissions. Today, **9 out of 10** trips in Minneapolis are taken in automobiles and of the 10 trips, **only 15% of trips are commuting to work!** Achieving this goal requires changes to both transportation infrastructure and land use to make it easier to walk, bike or take transit to access jobs, goods and services.

**A 40% reduction in car trips is necessary to achieve the City's climate goals**



Allow multifamily housing on select public transit routes, with higher densities along high-frequency routes and near METRO stations.



Designate additional areas for commercial uses in parts of the city where demand for retail goods and services exceeds the supply, and that are well-served by public transportation.

4

Minneapolis is annually ranked as one of the healthiest cities in the nation. In these rankings, the city's park system, clean air and water, and quality of life are often cited as contributing to its high standing. Yet despite being acknowledged for these beneficial assets and its efforts to make the city cleaner and healthier, **the City must persist in improving the quality of the air and surface waters and continue to improve the ecosystem. The**

**health of the city is directly correlated to the strength of this ecosystem and how well these systems can thrive despite the pressures of climate change.**



The City's draft Comprehensive Plan



Help us shape and refine these action steps in achieving the goal of climate change resilience. In 2040, Minneapolis will be resilient to the effects of climate change and diminishing natural resources, and will be on track to achieve an 80% reduction in greenhouse gas emissions by 2050.

---

 **Policy 16 - Environmental Impacts of Transportation / Action Step B**

Allow greater choice in availability and attractiveness of non-motorized modes, and continue to disincentivize driving and driving alone.

---

 **Policy 66 - Air Quality / Action Step A**

Reduce vehicle-related emissions through transportation and land use policies that result in fewer vehicle miles traveled.

---

 **Policy 66 - Air Quality / Action Step D**

Reduce emissions from energy sources through cost-sharing programs aimed at increasing energy efficiency and renewable energy sources in Minneapolis.

---

 **Policy 68 - Energy Efficient Buildings / Action Step A**

Pursue a deep-carbon building retrofit program, including a fuel-switching component that eliminates fossil fuel dependency from all existing buildings.

---

 **Policy 69 - Renewable & Carbon-Free Energy/ Action Step A**

Invest in grid modernization to accommodate increases in distributed renewable energy generation.

---

**Want to Give Your Comments & Feedback Later On?**

We invite you to visit [MINNEAPOLIS2040.com](http://MINNEAPOLIS2040.com) to review the draft comprehensive plan and provide your comments and feedback by July 22nd, 2018

## Exercise 1: Policies and Action Steps

### Goal: Living-wage Jobs

In 2040, all Minneapolis residents will have the training and skills necessary to participate in the economy and will have access to a living-wage job.

### Goal: Healthy, Sustainable, and Diverse Economy

In 2040, Minneapolis will remain the economic center of the region with a healthy, sustainable, and diverse economy.

Visit the Minneapolis 2040 website to view all the Policies and Action Steps for Living-wage Jobs and a Diverse Economy:

<https://minneapolis2040.com/goals/living-wage-jobs/>

<https://minneapolis2040.com/goals/healthy-sustainable-and-diverse-economy/>

1

The Twin Cities region is predicted to have a **shortfall of more than 114,000 workers by 2020**. To ensure the growth of the region's and the city's economy, all businesses must have access to

employees who can easily fill growing job demand, and small business owners and entrepreneurs need access to resources that help them start and grow their businesses.



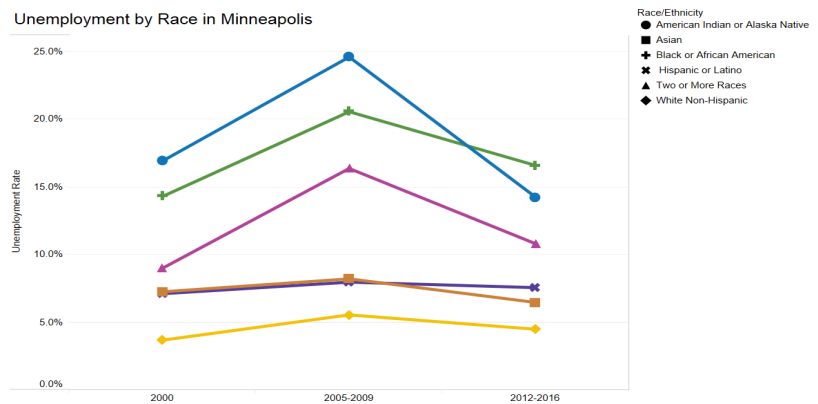
2

Educational and economic inequities in Minneapolis are apparent in the significant disparities that exist in high school graduation.

In Minneapolis, the **unemployment rate for blacks and American Indians is approximately three times higher than it is for white non-Hispanics:**

The unemployment rate is 17 percent for blacks and 14 percent for American Indians, compared with less than 5 percent for white non-Hispanics.

Unemployment by Race in Minneapolis



Sources: Decennial Census, American Community Survey

3



It is necessary to promote a city in which residents from all backgrounds have opportunities to gain and retain well-paying employment and a city where ethnic diversity in all fields of entrepreneurship is supported and promoted.

This will help amend past inequities, as people of color and indigenous people historically have not had equal access to education, employment and entrepreneurial resources.



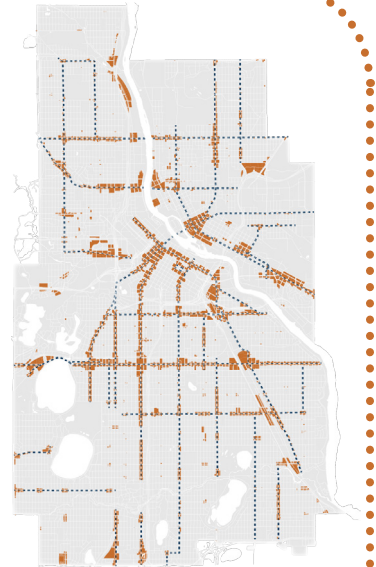
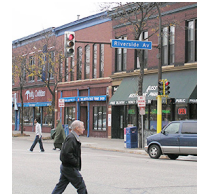
### Related Policies:

To achieve the goal of living-wage jobs and a healthy, sustainable, and diverse economy, the City of Minneapolis will expand opportunities to increase access to living-wage jobs and expand opportunities to start and grow businesses through the following 24 policies:

- Policy 2 - Access to Employment
- Policy 3 - Production and Processing
- Policy 5 - Visual Quality of New Development
- Policy 11 - Skyways
- Policy 20 - Transit
- Policy 21 - Freight
- Policy 22 - Downtown Transportation
- Policy 23 - Coordinated Development Strategy
- Policy 28 - MSP Airport
- Policy 29 - Creative Sector Economy
- Policy 30 - Arts and Cultural Assets
- Policy 31 - Creative Workers
- Policy 49 - Educational and Economic Access
- Policy 51 - Healthy Pre-K Development
- Policy 52 - Human Capital and a Trained Workforce
- Policy 53 - Quality of Life
- Policy 54 - Supporting Economic Growth
- Policy 55 - Business Innovation and Expansion
- Policy 56 - Supporting Small Businesses
- Policy 57 - Cluster Strategy
- Policy 58 - Business Districts and Corridors
- Policy 59 - Downtown
- Policy 64 - Food Businesses
- Policy 90 - Technology in the Economy

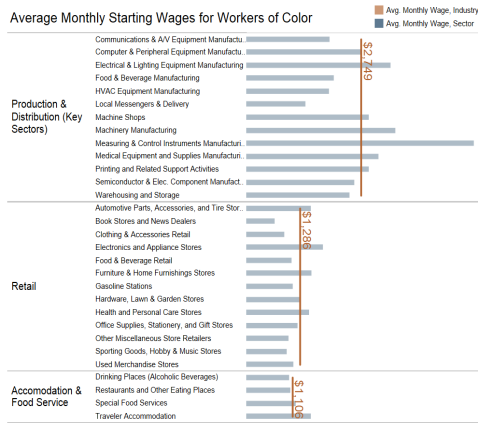
4

Minneapolis' neighborhood business districts and corridors also serve a vital economic role. Residents visit them for daily goods and services, they provide opportunities for small business and employment, and they serve as community gathering places.

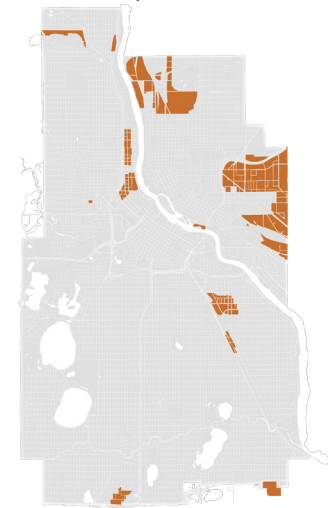


5

Production and processing businesses provide economic opportunities for people without a college degree, especially those of color, by offering higher wages than comparable jobs in the retail, accommodation and food service industries. Production and processing businesses in the region have average monthly starting wages for workers of color that are twice as high as retail businesses and nearly 2.5 times that of accommodation and food service businesses.



Designate additional areas for commercial uses in parts of the city where demand for retail goods and services exceeds the supply, and that are well-served by public transportation.



Designate Production and Processing Areas that comprise large contiguous tracts of land historically used for industrial purposes, that are well-served by transportation infrastructure for both people and freight, and that contain building stock suitable for production and processing businesses to expand access to higher wage job opportunities.

Source: US Census Bureau, Quarterly Workforce Indicators, Minneapolis-St. Paul-Bloomington, MN-WI (MN part), 2016 Q4

The City's draft Comprehensive Plan



Help us shape and refine these action steps in achieving these goals:

- In 2040, all Minneapolis residents will have the training and skills necessary to participate in the economy and will have access to a living-wage job, and
- In 2040, Minneapolis will remain the economic center of the region with a healthy, sustainable, and diverse economy.

---

### **Policy 2 - Access to Employment / Action Step A**

Develop minimum development densities for downtown and areas served by regional transit lines to ensure that enough land is available to accommodate projected employment growth.

---

### **Policy 3 - Production and Processing / Action Step A**

Designate Production and Processing Areas that comprise large contiguous tracts of land historically used for industrial purposes, that are well-served by transportation infrastructure for both people and freight, and that contain building stock suitable for production and processing businesses to expand access to higher wage job opportunities.

---

### **Policy 52 - Human Capital and a Trained Workforce / Action Step G**

Invest in human capital development in advanced manufacturing and in roles unlikely to be replaced by robotics, automation or other disruptive technologies and systems.

---

### **Policy 54 - Supporting Economic Growth/ Action Step C**

Identify and remove barriers, such as lack of technical support and challenges in accessing capital and physical space, to business creation and growth by residents of color, indigenous residents and low-income residents.

---

### **Policy 56 - Supporting Small Businesses / Action Step B**

Create opportunities for Minneapolis small businesses, prioritizing those owned by people of color, women and those with low incomes, to close the equity gap.

---

**Want to Give Your Comments & Feedback Later On?**

We invite you to visit [MINNEAPOLIS2040.com](http://MINNEAPOLIS2040.com) to review the draft comprehensive plan and provide your comments and feedback by July 22nd, 2018

The City's draft Comprehensive Plan



Help us shape and refine the Action Steps in order to help achieve the comprehensive plan goals. If you want to comment on a specific Policy or Action Step, please fill in the number and letter that you would like to provide feedback on.

---

Policy \_\_\_\_ / Action Step \_\_\_\_

---

Policy \_\_\_\_ / Action Step \_\_\_\_

---

Policy \_\_\_\_ / Action Step \_\_\_\_

---

Policy \_\_\_\_ / Action Step \_\_\_\_

---

Policy \_\_\_\_ / Action Step \_\_\_\_

---

**Want to Give Your Comments & Feedback Later On?**

We invite you to visit [MINNEAPOLIS2040.com](http://MINNEAPOLIS2040.com) to review the draft comprehensive plan and provide your comments and feedback by July 22nd, 2018